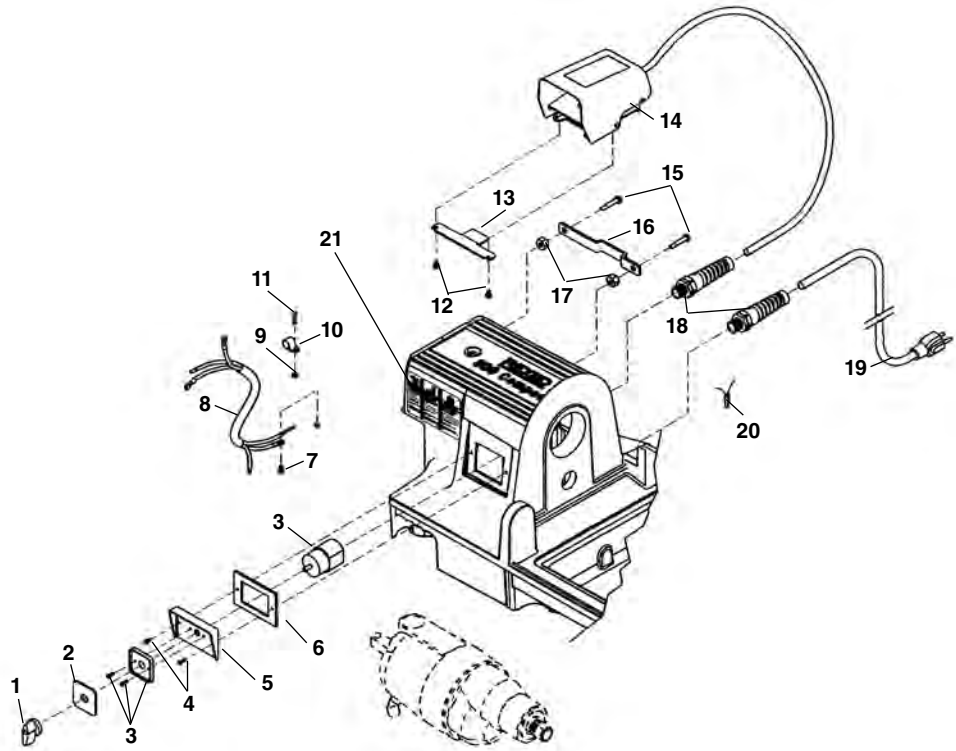


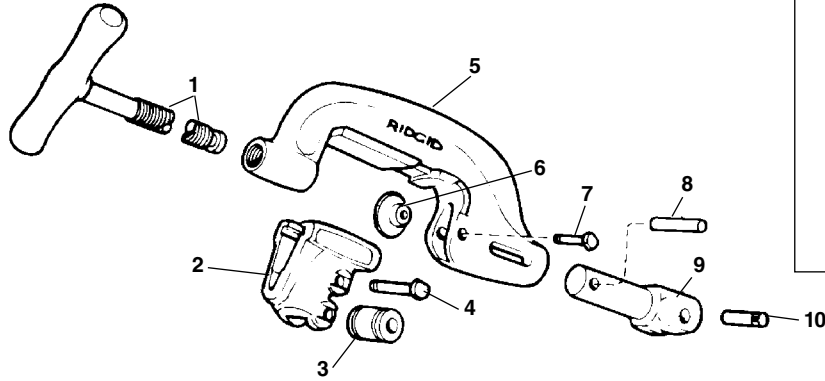
120V 60Hz Electrical

**NOTE: Order parts by Catalog Number only.
DO NOT order by Reference Number.**

| Ref. No. | Catalog No. | Description |
|----------|-------------|----------------------------|
| 1 | 61397 | Switch Knob |
| 2 | 61967 | Switch Face Plate |
| 3 | 54157 | Switch Assembly |
| 4 | 54162 | Screw (2) |
| 5 | 61917 | Switch Plate |
| 6 | 54172 | Gasket |
| 7 | 45420 | Screw #10 - 24 x 3/8" |
| 8 | 30953 | Connecting Cord |
| 9 | 44695 | Hex Nut #10 - 24 |
| 10 | 61912 | Cord Retainer |
| 11 | 92455 | Screw #10 - 24 x 3/4" |
| 12 | 54357 | Screw 5/16" - 18 (2) |
| 13 | 58602 | Foot Switch Hook |
| 14 | 36642 | B-294 Foot Switch |
| 15 | 54137 | Screw (2) |
| 16 | 58267 | Foot Switch Hanger Bracket |
| 17 | 96730 | Hex Nut 5/16" - 18 |
| 18 | 72107 | Strain Relief |
| 19 | 46740 | Power Cord |
| 20 | 44635 | End Splice Connector |
| 21 | 78367 | Warning Plate |



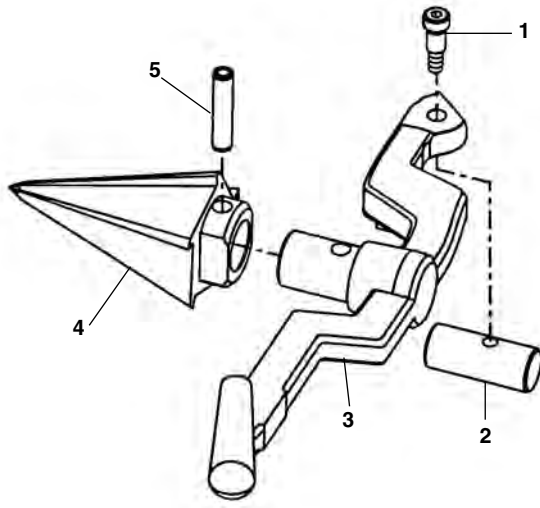
No. 360 Cutter



| Ref. No. | Catalog No. | Description |
|----------|-------------|-------------------------------|
| — | 42370 | 360 Cutter Complete |
| 1 | 43625 | D-1024-X Screw Handle |
| 2 | 33400 | C-878-X Roll Housing Assembly |
| 3 | 34305 | E-1751 Roll (2) |
| 4 | 34310 | E-1752 Roll Pin (2) |
| 5 | 43595 | C-877 Cutter Frame |
| 6 | 33100 | F-514 Cutter Wheel Thin |
| | 33105 | F-3 Cutter Wheel H.D. |
| | 44185 | E-1032 Cutter Wheel Std. |
| 7 | 34780 | F-9 Wheel Pin |
| 8 | 45435 | E-3549 Retaining Pin |
| 9 | 45505 | E-3759 Support Arm |
| 10 | 45520 | E-3819 Pin |

No. 344 Reamer

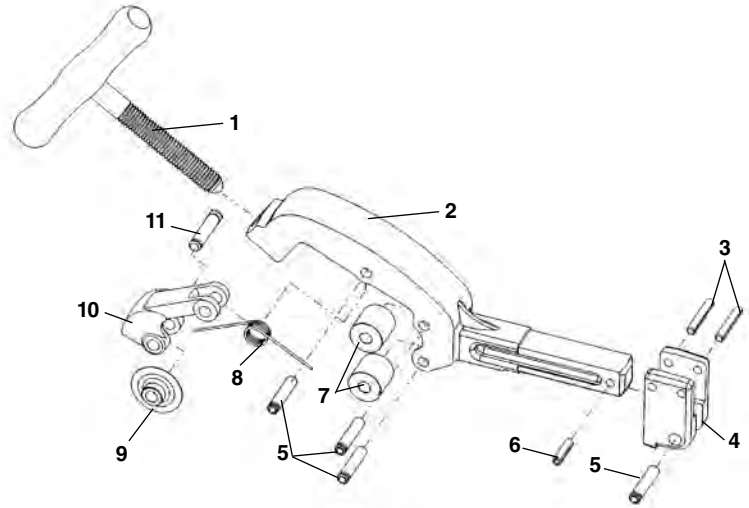
| Ref. No. | Catalog No. | Description |
|----------|-------------|---------------------|
| — | 34612 | 344 Reamer Complete |
| 1 | 36262 | Shoulder Screw |
| 2 | 36267 | Pivot Pin |
| 3 | 36272 | Reamer Arm |
| 4 | 36277 | Reamer Cone |
| 5 | 35355 | Split Roll Pin |



No. 732 Pipe Cutter

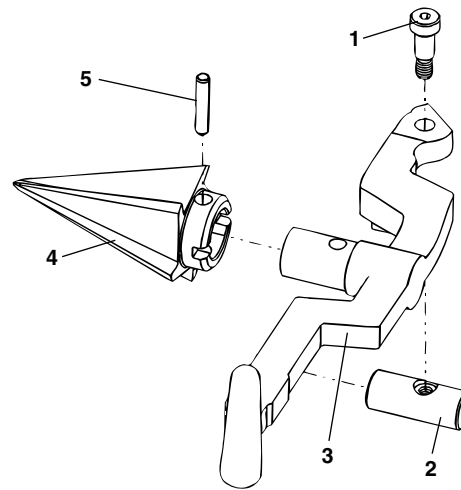
NOTE: Order parts by Catalog Number only.
DO NOT order by Reference Number.

| Ref. No. | Catalog No. | Description |
|----------|-------------|----------------------------|
| — | 58657 | 732 Cutter Assembly |
| 1 | 58607 | Handle Assembly |
| 2 | 58612 | Cutter Frame |
| 3 | 54300 | Roll Pin 1/4" x 1 1/2" (2) |
| 4 | 58627 | Support Arm Bracket |
| 5 | 46662 | Roller Pin (4) |
| 6 | 58090 | Roll Pin 1/4" x 1" |
| 7 | 46960 | Roll (2) |
| 8 | 58617 | Torsion Spring |
| 9 | 44185 | Cutter Wheel |
| 10 | 58622 | Wheel Housing |
| 11 | 34780 | Wheel Pin |



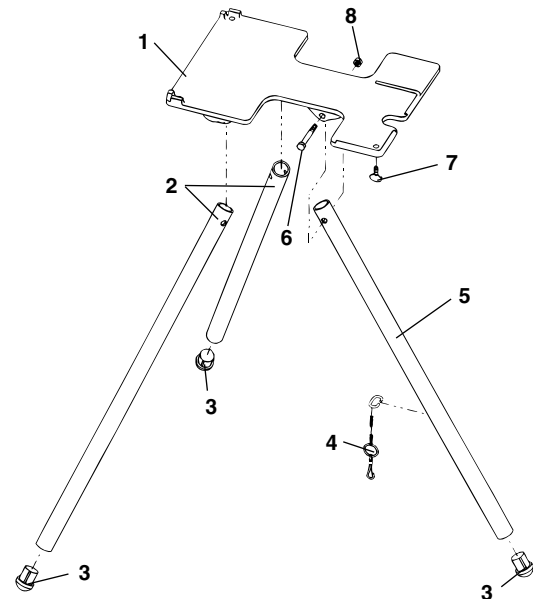
No. 344 Reamer

| Ref. No. | Catalog No. | Description |
|----------|-------------|---------------------------|
| — | 34612 | 344 Reamer Complete |
| 1 | 36262 | Shoulder Screw |
| 2 | 36267 | Pivot Pin |
| 3 | 36272 | Reamer Arm |
| 4 | 36277 | Reamer Cone (R.H.) |
| | 46660 | Reamer Cone (L.H. & R.H.) |
| 5 | 35355 | Split Roll Pin |



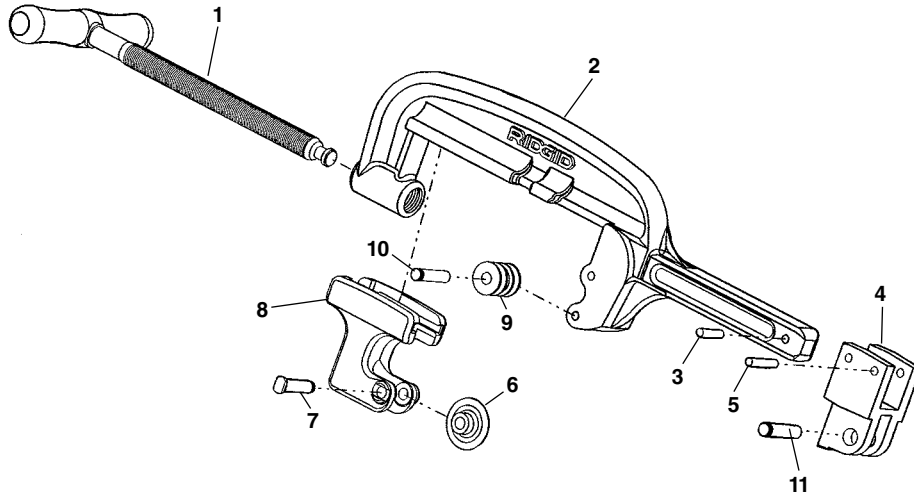
No. 1203 Stand

| Ref. No. | Catalog No. | Description |
|----------|-------------|------------------------------|
| — | 61187 | 1203 Stand |
| 1 | 61182 | Base |
| 2 | 58637 | Front Leg (2) |
| 3 | 61470 | Leg Rest (3) |
| 4 | 40945 | Chain Assembly |
| 5 | 58412 | Rear Leg |
| 6 | 80045 | Screw 3/8" - 16 x 3 1/4" (3) |
| 7 | 46220 | Thumb Screw (3) |
| 8 | 79985 | Lock Nut 3/8" - 16 (3) |



No. 763 Pipe Cutter

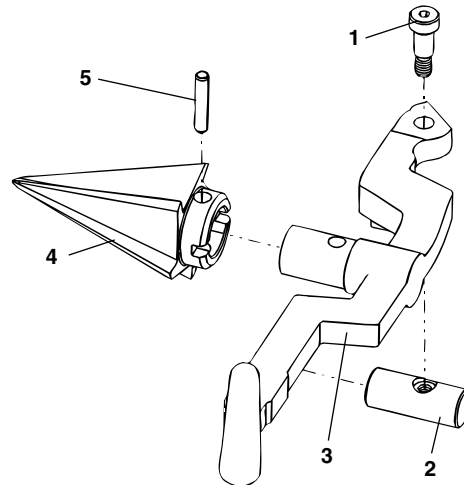
**NOTE: Order parts by Catalog Number only.
DO NOT order by Reference Number.**



| Ref. No. | Catalog No. | Description |
|----------|-------------|-------------------------|
| — | 52452 | 763 Cutter Complete |
| 1 | 54197 | Feed Screw Handle |
| 2 | 61872 | Cutter Frame |
| 3 | 58090 | 1/4" x 1" Roll Pin |
| 4 | 61877 | Bracket |
| 5 | 54300 | Roll Pin |
| 6 | 44185 | E1032 Cutter Wheel |
| 7 | 34780 | Pin & Clip |
| 8 | 52247 | Wheel Housing |
| 9 | 46960 | Rolls f/Steel Pipe (2) |
| — | 43682 | Rolls f/Coated Pipe (2) |
| 10 | 46662 | Roll Pin (2) |
| 11 | 45520 | Hinge Pin |

No. 743 Reamer

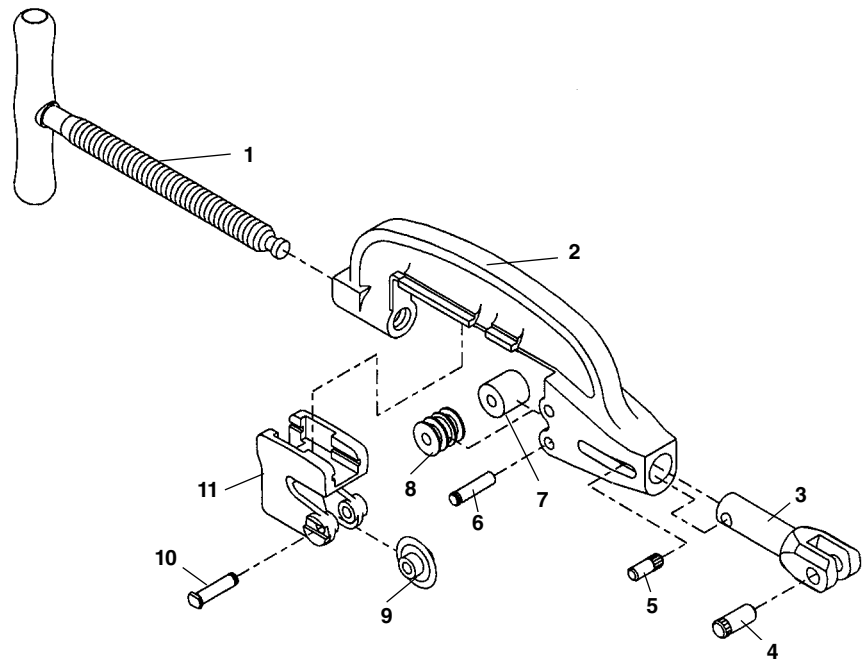
| Ref. No. | Catalog No. | Description |
|----------|-------------|---------------------|
| — | 52272 | 743 Reamer Complete |
| 1 | 36262 | Shoulder Screw |
| 2 | 36267 | Pivot Pin |
| 3 | 36272 | Reamer Arm |
| 4 | 52277 | Reamer Cone |
| 5 | 35355 | Split Roll Pin |



No. 364 Cutter

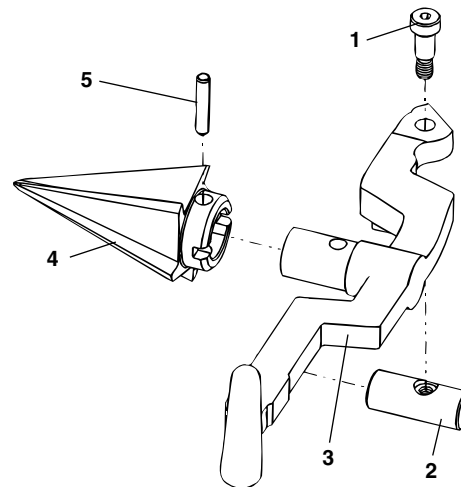
**NOTE: Order parts by Catalog Number only.
DO NOT order by Reference Number.**

| Ref. No. | Catalog No. | Description |
|----------|-------------|--------------------------|
| — | 34617 | 364 Cutter Complete |
| 1 | 36287 | Feed Screw Handle |
| 2 | 36292 | Cutter Frame |
| 3 | 45505 | Support Arm |
| 4 | 45520 | Hinge Pin |
| 5 | 35317 | Retaining Pin |
| 6 | 46662 | Roll Pin (2) |
| 7 | 46960 | Roll (Steel) (2) |
| 8 | 43682 | Roll Pl. Coated Pipe (2) |
| 9 | 44185 | Cutter Wheel E-1032 |
| 10 | 34780 | Wheel Pin |
| 11 | 36282 | Wheel Housing |



No. 344 Reamer

| Ref. No. | Catalog No. | Description |
|----------|-------------|---------------------------|
| — | 34612 | 344 Reamer Complete |
| 1 | 36262 | Shoulder Screw |
| 2 | 36267 | Pivot Pin |
| 3 | 36272 | Reamer Arm |
| 4 | 36277 | Reamer Cone (R.H.) |
| | 46660 | Reamer Cone (L.H. & R.H.) |
| 5 | 35355 | Split Roll Pin |



No. 839 Nipple Chuck

| Ref. No. | Catalog No. | Description |
|----------|-------------|---------------------|
| — | 35867 | No. 839 Adapter Kit |
| 1 | 54307 | Drive Screw (6) |
| 2 | 47502 | Roll Pin |
| 3 | 47507 | Tube Assembly |
| 4 | 47512 | Pin, 3/4" x 2 3/4" |

